



IDLink Netfinger T9 is an innovative Face and Biometric Fingerprint Access Control Terminal that comes with accurate and rapid matching speed for Time Attendance and Door Access control. It has multifactor authentication such as Face, Fingerprint, RF card and PIN and it comes with superior matching engine (*#1<sup>st</sup> rank in Fingerprint Verification Competition*).

IDLink Netfinger T9 has a 5" Touch Color LCD with enhanced touch sensitivity, built-in Camera with dual card reader support for face detection and identification. It has a 0.8 inch wide active image area for fingerprint for enhanced authenticate rate (FBI PIV Certified Fingerprint Sensor Module). The unit comes with an auto tilt high quality camera and can auto detect face up to 3 meters.

## ROBUST NETFINGER T9

- Face Detection and Identification (Auto Tilt Camera)
- Dual Card Reader Support
- Superior Matching Engine
- 5" Touch Color LCD
- Touch Keypad

### LIVE AND FAKE FINGER DETECTION



Silicone

Rubber

Film

Paper

Gelatin

# ROBUST NETFINGER T9

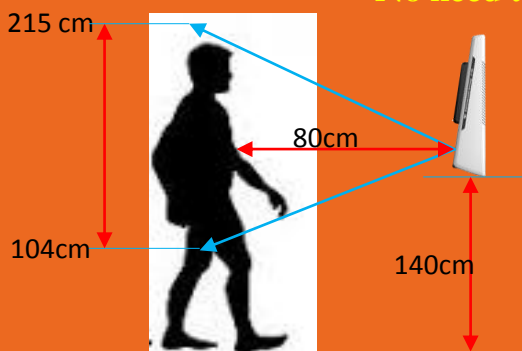
## Features

- ▶ **High-Performance Face Recognition** - 1:2,000 authentication in less than 1 second, 1 : N is 10,000 faces (subject to change)
- ▶ **5" Touch LCD Screen** - Electrostatic capacity LCD enhanced touch sensitivity and improved user
- ▶ **Large Capacity Memory** - Face Capacity : 10,000 faces (subject to change)
  - Fingerprint Capacity : 250,000 fingers
- ▶ **External Micro SD card** - User info and log data backup and upload
- ▶ **Enhanced Card Option** - Dual card support (RF EM125kHz, Mifare 13.56mHz), HID iClass and HID Prox support
- ▶ **External SD Card Support** - Export & Import data, upgrading the firmware.
- ▶ **Android OS Support** - Easy to develop various applications

## FACE RECOGNITION USING AUTO TILT CAMERA

Expansion of face recognition range per user's height

No need to bend your back and knees



VS



Description	Specifications
CPU	1GHz Quad Core
LCD	5.0 inch Touchpad LCD (480*800)
Camera	Tilted Dual Camera (Color & IR)
Flash / RAM	Flash 4G + MicroSD 8G Bytes / 2GBytes
User Capacity	250,000 User / 250,000 Card / 250,000 Finger (1:25,000) 10,000 Face (1:2,000 Template) 10,000,000 Log / 20,000 Image Log
Voice / Beep	Sounds volume control, Supports multiple languages
Fingerprint Module	FAS04 (20*20 mm / 400*400 pixel / 500DPI) - PIV certificated fingerprint sensor
Card Reader Option	125KHz RF / 13.56MHz Smart Card (1 Sam Socket) HID 125K Prox card (Option) / HID iClass Card (Option)
External SD Card Supported	Data Backup / FW Upgrade
Luminance Sensor	If illumination is low, image log is saved as identifiable IR image.
Communication Interface	TCP / IP, Wiegand (26/34 bits)
Server Coupling	O (with the Unis Server)
Tamper	Case Open & Removal from the wall detection
Dimension	149.5(W) x 208.5(H) x 46(D) mm
Lock Control	EM, Strike, Motor Lock, Auto Door
I/O	4 In (1 Exit, 3 Monitor), 2 Out (Combination with Lock Control)
Operation System	Android



FBI PIV  
Certified  
Fingerprint  
Sensor  
Module

DISTRIBUTOR / RESELLER