



iDCube Time Management System (TMS) is a fully web-based time and attendance application developed by iDLink Systems, that provides your organization with the necessary attendance and absence management processing.

iDCube Time Management System is a TMS software that works seamlessly together with Leave Management, Overtime and Timesheet management modules to increase productivity by eliminating time-consuming tasks.

The software is easy to use, flexible and simple to create OT, Shift tables to allow you to create unlimited daily, hourly, fixed OT rates and shift frequencies.

It is inbuilt with powerful reporting capabilities in each of the modules. With many standard reports available and extensive filtering, sorting and formatting options, you can produce your reports with just a click of button.

Now you can easily transform your data into useful information and has the security ensured with complete audit trails and flexible user security setting.

## **iDCUBE TIME MANAGEMENT SYSTEM**

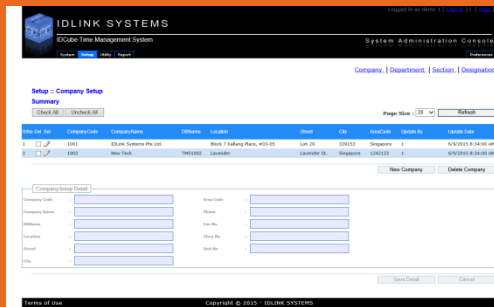
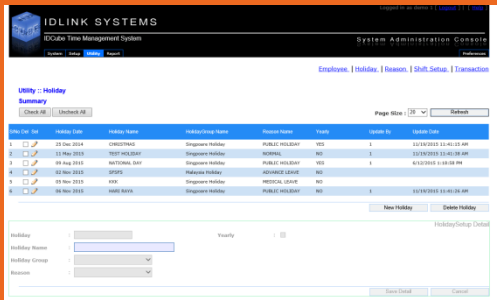
- Real-time data
- Seamless integration
- User-friendly, scalable and expandable
- Convenient - Fully web-based application
- Timely analytical reports to support business decisions
- Flexible and comprehensive
- Full audit trails and full accountability

# idCUBE TIME MANAGEMENT SYSTEM

## Features

- ▶ Real-time information and seamless process from Clock to Time Management System
- ▶ Automatic calculation of normal and overtime hours with different overtime rates
- ▶ Record absences, lateness, overtime and etc
- ▶ Support weekly and monthly pay period
- ▶ Unlimited shift
- ▶ Overtime setting for round up / down

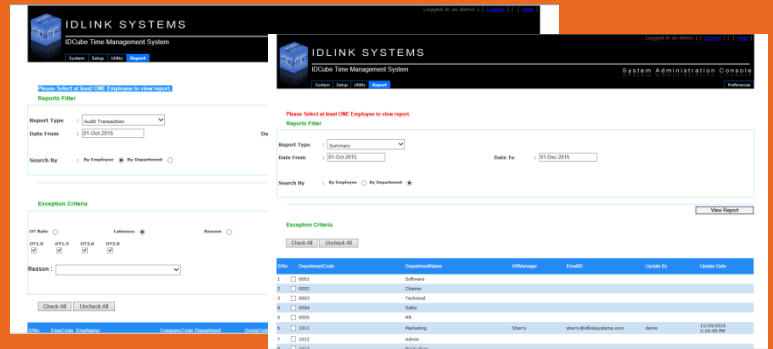
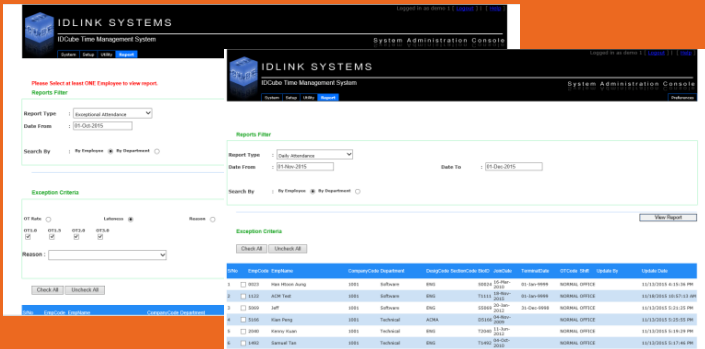
## Sample Screenshots of idCube TMS



idCube TMS can also view from phone browser



## Sample Reports of idCube TMS



Description	Specifications
OS	Windows 7 Professional edition Windows 8 Professional edition Any windows server edition which support Internet Information Services (IIS). We are using Internet Information Service (IIS web server)
CPU	1 GHz or faster 32-bit (x86) or 64-bit (x64) processor
Memory	Recommended : 4 GB
Hard Disk	Minimum 10 GB free memory
Database	MS SQL 2008 Express Edition and above

**DISTRIBUTOR / RESELLER**